

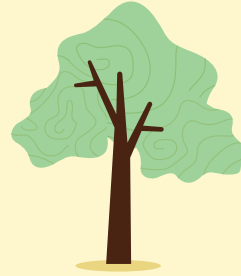


FREE TREES AND SHRUBS FOR B&NES RESIDENTS

In partnership with Bath & North East Somerset Council, More Trees are giving away free native trees, hedging plants and shrubs to local residents.

WHY PLANT A TREE?

- Trees help fight climate change by absorbing carbon and helping keep places cooler.
- Trees provide homes for wildlife and help nature thrive.
- Trees improve our health and wellbeing by creating greener, healthier places to spend time.
- Trees make our communities better places to live, making them more attractive, welcoming and enjoyable.



WHAT'S AVAILABLE:

Native trees - small, medium or large.

A native hedge mix

Native shrub collection

SPECIES MAY INCLUDE:

Trees: Oak, Hornbeam, Hazel, Silver Birch, Cherry, Field Maple, Spindle

Hedging plants: Hawthorn, Blackthorn, Wild Privet, Wayfaring Tree, Purging Blackthorn

HOW TO APPLY:

Scan the QR code or email info@moretrees.earth to sign up.

We'll contact you in November with further details about your tree!



GOOD TO KNOW:

- Plants will be available to collect from our nursery in Twerton over the winter when ready to plant.
- All plants are supplied as bare-root stock, making them easy to transport and plant.
- Full planting instructions will be provided!





More Trees
BANES



MORE TREES IS A LOCAL CHARITY THAT ENABLES PEOPLE TO COME TOGETHER TO GROW, PLANT AND CARE FOR CLIMATE RESILIENT TREES.

We do this from our central nursery in Twerton and 18 Community Tree Nurseries around the city, six of which are at schools.

Our team of volunteers collect seeds from native trees at local woodlands, which are sown and grown into small tree seedlings at our central nursery. They then spend 1-2 years growing at one of the community nurseries before being used in local planting projects.

Collecting from a large number of trees at different woodlands means our trees are from local stock and have lots of genetic diversity which make them resilient to climate change.



Your trees will have been grown and cared for by one of our many volunteers – **why not join us? No experience needed.**

If you want to get involved, support our work (we rely on voluntary donations), or want any more information get in touch by scanning below or searching **moretrees.earth** to find out more.

